

Tiger Pro 72HC-BDVP

525-545 Watt

BIFACIAL MODULE WITH DUAL GLASS

P-Type

Positive power tolerance of 0~+3%

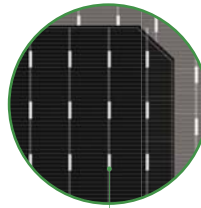
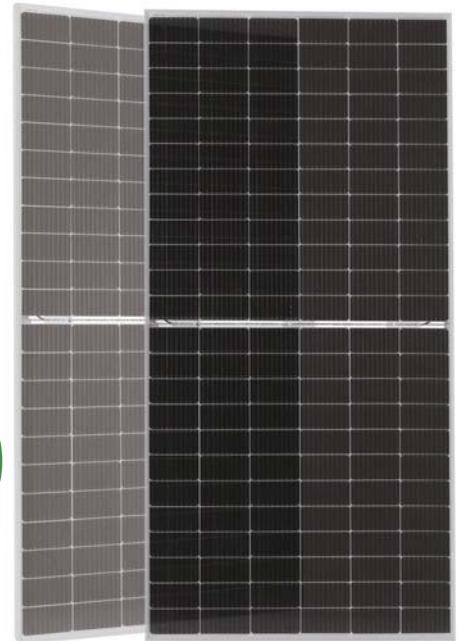
IEC61215(2016), IEC61730(2016)

ISO9001:2015: Quality Management System

ISO14001:2015: Environment Management System

ISO45001:2018

Occupational health and safety management systems



Bifacial Technology

Key Features



Multi Busbar Technology

Better light trapping and current collection to improve module power output and reliability.



PID Resistance

Excellent Anti-PID performance guarantee via optimized mass-production process and materials control.



Higher Power Output

Module power increases 5-25% generally, bringing significantly lower LCOE and higher IRR.



Longer Life-time Power Yield

0.45% annual power degradation and 30 year linear power warranty.



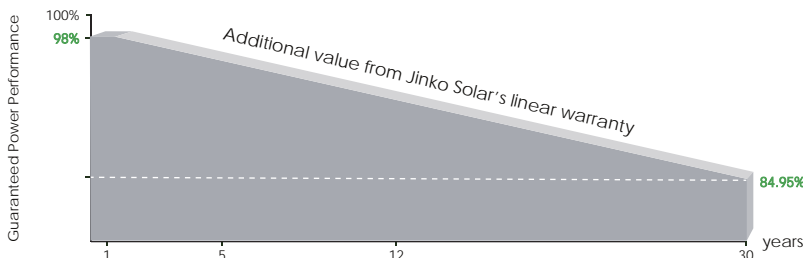
Enhanced Mechanical Load

Certified to withstand: wind load (2400 Pascal) and snow load (5400 Pascal).



POSITIVE QUALITY™
Continuous Quality Assurance

LINEAR PERFORMANCE WARRANTY

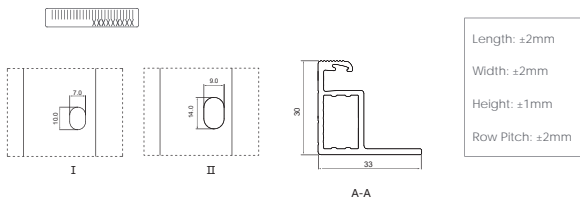
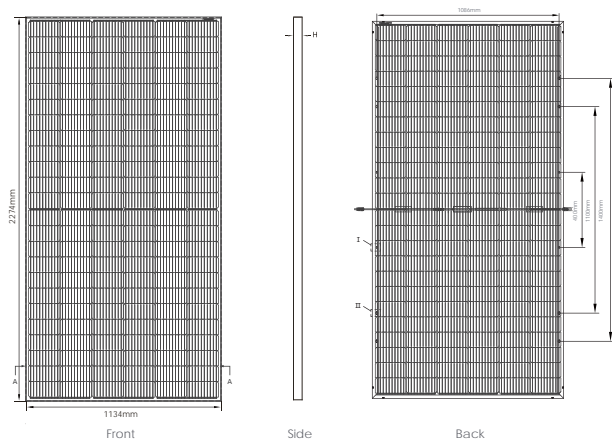


12 Year Product Warranty

30 Year Linear Power Warranty

0.45% Annual Degradation Over 30 years

Engineering Drawings

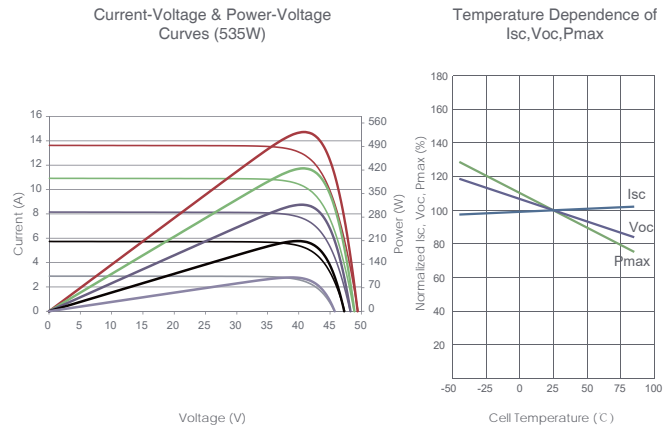


Packaging Configuration

(Two pallets = One stack)

35pcs/pallets, 70pcs/stack, 630pcs/ 40'HQ Container

Electrical Performance & Temperature Dependence



Mechanical Characteristics

Cell Type	P type Mono-crystalline
No. of cells	144 (6×24)
Dimensions	2274×1134×30mm (89.53×44.65×1.18 inch)
Weight	34.3 kg (75.6 lbs)
Front Glass	2.0mm, Anti-Reflection Coating
Back Glass	2.0mm, Anti-Reflection Coating
Frame	Anodized Aluminium Alloy
Junction Box	IP68 Rated
Output Cables	TUV 1×4.0mm ² (+): 400mm, (-): 200mm or Customized Length

SPECIFICATIONS

Module Type	JKM525M-72HL4-BDVP		JKM530M-72HL4-BDVP		JKM535M-72HL4-BDVP		JKM540M-72HL4-BDVP		JKM545M-72HL4-BDVP	
	STC	NOCT	STC	NOCT	STC	NOCT	STC	NOCT	STC	NOCT
Maximum Power (Pmax)	525Wp	391Wp	530Wp	394Wp	535Wp	398Wp	540Wp	402Wp	545Wp	405Wp
Maximum Power Voltage (Vmp)	40.80V	37.81V	40.87V	37.88V	40.94V	37.94V	41.13V	38.08V	41.32V	38.25V
Maximum Power Current (Imp)	12.87A	10.33A	12.97A	10.41A	13.07A	10.49A	13.13A	10.55A	13.19A	10.60A
Open-circuit Voltage (Voc)	49.42V	46.65V	49.48V	46.70V	49.54V	46.76V	49.73V	46.94V	49.92V	47.12V
Short-circuit Current (Isc)	13.63A	11.01A	13.73A	11.09A	13.83A	11.17A	13.89A	11.22A	13.95A	11.27A
Module Efficiency STC (%)	20.36%		20.55%		20.75%		20.94%		21.13%	
Operating Temperature(°C)	-40°C~+85°C									
Maximum system voltage	1500VDC (IEC)									
Maximum series fuse rating	30A									
Power tolerance	0~+3%									
Temperature coefficients of Pmax	-0.35%/°C									
Temperature coefficients of Voc	-0.28%/°C									
Temperature coefficients of Isc	0.048%/°C									
Nominal operating cell temperature (NOCT)	45±2°C									
Refer. Bifacial Factor	70±5%									

BIFACIAL OUTPUT-REAR SIDE POWER GAIN

		5%		15%		25%	
		Maximum Power (Pmax)	Module Efficiency STC (%)	Maximum Power (Pmax)	Module Efficiency STC (%)	Maximum Power (Pmax)	Module Efficiency STC (%)
5%	Maximum Power (Pmax)	551Wp	21.38%	557Wp	21.58%	562Wp	21.78%
	Module Efficiency STC (%)	21.38%	21.58%	21.78%	21.99%	22.19%	
15%	Maximum Power (Pmax)	604Wp	23.41%	610Wp	23.64%	615Wp	23.86%
	Module Efficiency STC (%)	23.41%	23.64%	23.86%	24.08%	24.30%	
25%	Maximum Power (Pmax)	656Wp	25.45%	663Wp	25.69%	669Wp	25.93%
	Module Efficiency STC (%)	25.45%	25.69%	25.93%	26.18%	26.42%	

*STC: Irradiance 1000W/m² Cell Temperature 25°C AM=1.5
 NOCT: Irradiance 800W/m² Ambient Temperature 20°C AM=1.5 Wind Speed 1m/s